

CHAPTER TWO POPULATION

INTRODUCTION

Bullitt County is located in north central Kentucky, just south of the city of Louisville and consists of a total area of approximately 300.20 square miles or 192,128 acres. The county includes eight incorporated cities of which, Shepherdsville is the county seat. Bullitt County is the home to about 74,319 residents according to the 2010 census. The County added over 13,000 residents and over 8,000 households between 2000 and 2010 Censuses. The greatest concentrations of population are in the northern portions of the county along interstate 65, in Shepherdsville and Mt. Washington. According to the U.S. Census Bureau and the Kentucky State Data Center the county's population increased by over 21 percent between 2000 and 2010, from approximately 61,200 people to over 74,000. Recent projections from the Kentucky State Data Center suggests that the population of Bullitt County will increase to over 114,000 residents by the year 2040.

The analysis of current and future population trends serves as a fundamental basis for many planning decisions. The size of the population, its composition, and spatial distribution can significantly impact future social, economic, and physical land use needs. An examination of the current and future population size as well as composition also serves as a reference point to predict future demand for additional facilities and services.

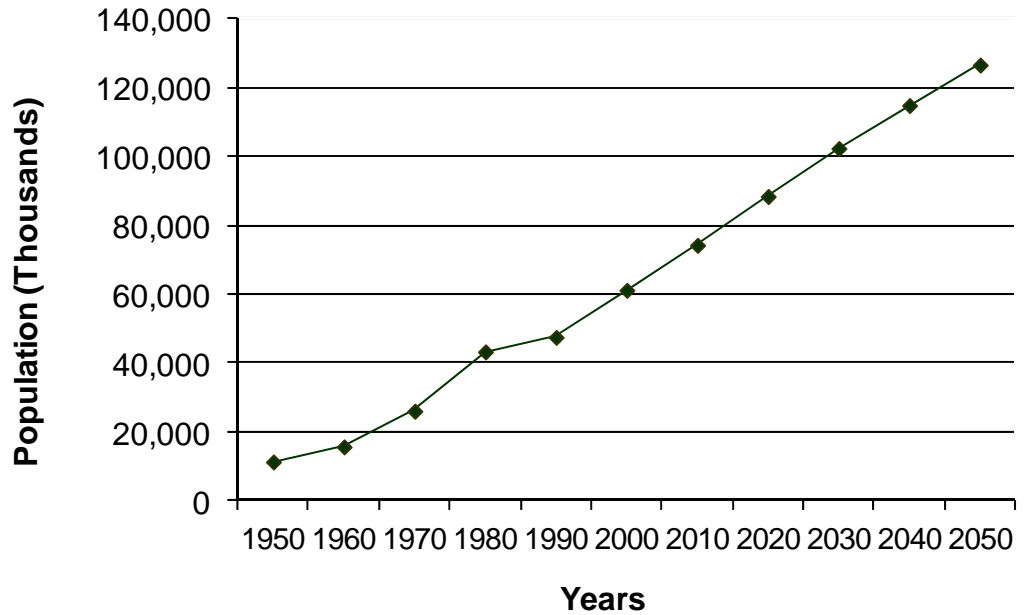
PAST POPULATION TRENDS

It is necessary to examine past population trends for an area to understand future projections. Figure 2-1 shows the change in population for Bullitt County from 1950 to 2010 based on the U.S. Census. The projected county population growth from 2020 to 2050 is also shown. It can be seen that the population of Bullitt County has experienced high rates of growth since 1950. The population of the county more than doubled between 1960 and 1970 and then more than doubled again from 1970 to 1980. The slowest period of growth was 9.74% from 1980 to 1990, however this compares to a statewide growth rate of less than one percent during the same period. Of 120 Kentucky counties, Bullitt County ranked 13th in population in 2000. It moved up to 10th in population in 2010. The county was the 8th fastest growing county in Kentucky from 2000 to 2010.

Bullitt County



**FIGURE 2-1
Bullitt County Population**

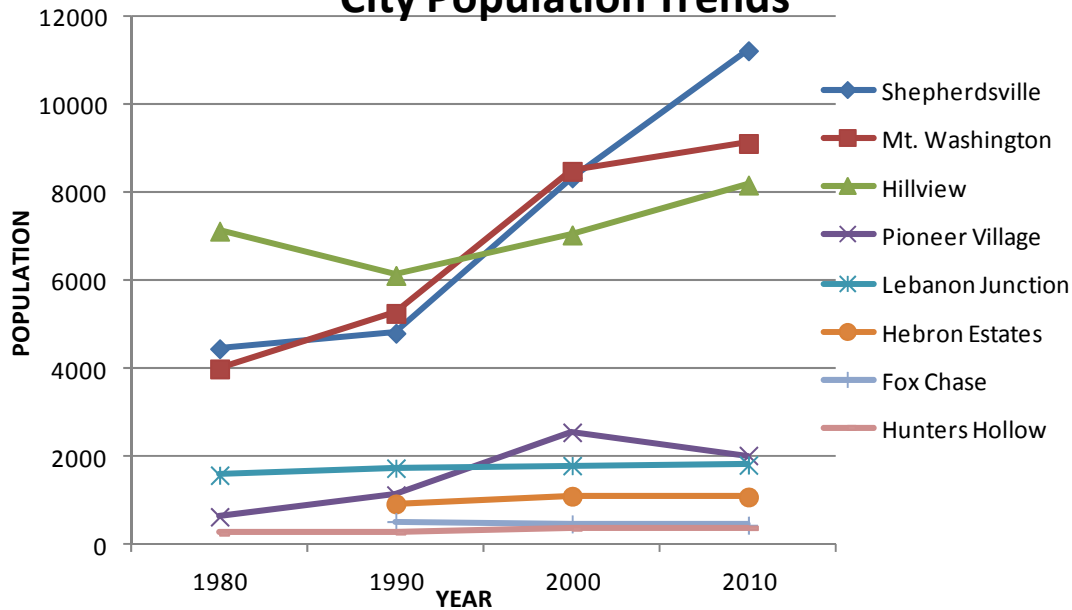


YEAR	POPULATION	% CHANGE
1950	11,349	
1960	15,726	38.57%
1970	26,090	65.90%
1980	43,346	66.14%
1990	47,567	9.74%
2000	61,236	28.74%
2010	74,319	21.36%
2020	88,508	19.09%
2030	102,461	15.76%
2040	114,952	12.19%
2050	126,708	10.23%

Source: 1950-2010 US Census; 2020-2015 University of Louisville, Ky State Data Center, 2011 Projections

Figure 2-2 shows the population of the eight incorporated cities in Bullitt County from 1980 to 2010 along with the city's class, year established and the approximate area in square miles. The City of Shepherdsville, the county seat, is the largest of the eight in both land area and population. Shepherdsville more than doubled in population (133%) from 1990 to 2010. According to the KSDC esti-

**Figure 2-2
City Population Trends**



City	Class	Year Est.	Area	1980	1990	2000	2010
Shepherdsville	4th	1793	10.0	4,454	4,805	8,334	11,222
Mt. Washington	4th	1822	6.1	3,997	5,256	8,485	9,117
Hillview	4th	1974	3.3	7,124	6,119	7,037	8,172
Pioneer Village	4th	1974	0.7	637	1,130	2,555	2,030
Lebanon Junction	5th	1895	5.7	1,581	1,741	1,801	1,813
Hebron Estates	5th	1984	0.6		930	1,104	1,087
Fox Chase	6th	1983	0.4		528	476	447
Hunters Hollow	6th	1979	0.1	260	286	372	386

Source: 1980-2010 US Census, Ky Secretary of State

Area in square miles

mate, the City of Shepherdsville ranks 32nd out of 422 cities in Kentucky in terms of population size in 2010. Mt. Washington also experienced significant growth (73%) during the same time period. It is likely that Mt. Washington's 2010 census population is actually higher than the current official census numbers. The city has challenged their 2010 census counts through the 2010 Census Count Question Resolution (CQR) Program. The basis for the challenge is that a wrong geographic boundary was used to produce the official census population and housing counts for the city as city maps were not up to date and did not include some areas annexed by the city since the 2000 census. The City of Mount Washington estimates that their population was actually about 14,500 in 2010.

Bullitt County



Population

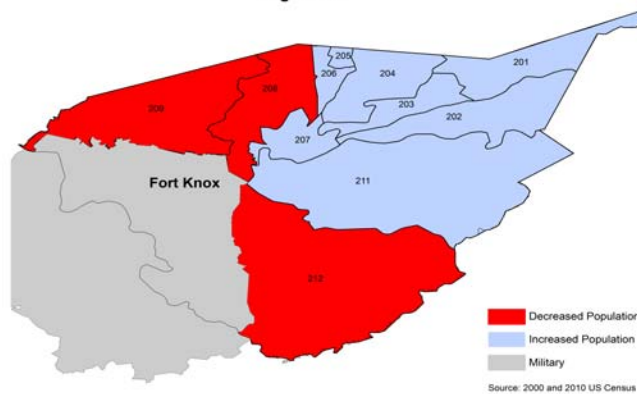
The greatest concentrations of population are in the northern portions of the county along Interstate-65, in Shepherdsville, Hillview, Pioneer Village, and Brooks and in the Mt. Washington area along the Highway 44 East corridor and Bardstown Road.

Table 2-1 shows population trends by census tract for Bullitt County from 2000 to 2010. As shown on Figure 2-3, the census tracts in the northeast third of the county grew in population while the areas to the northwest and south lost population. The largest percentage increase (57.4% and 61.6%) occurred in Census Tracts 202 and 203 which are in the Mt. Washington area of Bullitt County.

Table 2-1
Bullitt County Population Change By Census Tract

Census Tract	2000 Population	2010 Population	% Change
201	8,350	10,409	24.7%
202	5,942	9,350	57.4%
203	2,935	4,744	61.6%
204	5,272	6,065	15.0%
205	4,928	5,612	13.9%
206	7,097	7,122	0.4%
207	6,593	8,222	24.7%
208	5,630	5,067	-10.0%
209	2,800	2,731	-2.5%
211	6,809	10,172	49.4%
212	4,880	4,825	-1.1%
Total	61,236	74,319	21.4%

Figure 2-3



FUTURE PROJECTIONS

Population projections are derived from statistical analysis that considers both recent and historic population trends. Population forecasts for counties such as Bullitt are typically fairly accurate while those for cities are generally considered less accurate due to the possibility of annexations and potential for larger scale development due to the availability of infrastructure. Such possibilities could significantly alter the population of an area in a short period of time and are not easily predicted.

Population projections for Bullitt County are shown on Figure 2-1. These projections were obtained from the Kentucky State Data Center at the University of Louisville which produces and regularly updates projections of Kentucky state and county resident populations by age and sex. In general, the forecast assumptions are based on recent history and trends for county-level components of change, births, deaths, and migration. Kentucky county populations are then projected for five year intervals from 2015 to 2050 using the demographic cohort-component method. Projections were made for the total population with the delineation of males and females for each of the five year age groups through 85 years and above. Components of change (live births, deaths, and net migration) are also projected for each interval. The projections used for the development of the Bullitt County Comprehensive Plan were released by the Kentucky State Data Center in 2011. These projections show that the population of the county will continue to grow over the next forty years. By the year 2050, the Kentucky State Data Center projects that population of Bullitt County will reach 126,708.

Bullitt County is being influenced by the same population trends as the United States overall, as well as much of western civilization which is entering a period of little or no growth. The birth rate is substantially lower than in earlier periods. Although the death rate has declined, more deaths are occurring due to the aging of the population overall. For the 2006 calendar year, Bullitt County residents reported a total of 805 births, a 92.6% increase since 1960. The number of deaths for the same year was 403, marking a 190% increase since 1960. The next gain in

Bullitt County



population for 2006 was 402. Over the ten years period from 2001 to 2010, births over deaths accounted for a population gain of roughly 3,400. The actual population gain in Bullitt County for the period was over 13,000. This shows that migration is the key component of growth and the major determinant of population growth rates.

AGE AND SEX CHARACTERISTICS

A population pyramid shows the proportion of a population by sex and age group. Age groups are broken into five year increments up to the age of eighty-five. Those 85 and older are typically shown as one group. A population pyramid for a growing population is in the shape of a true pyramid, wide on the bottom and tapering smaller at the top. A large base of young and working aged persons support a smaller number of elderly persons. An inverted pyramid, with fewer younger persons than older persons, indicates that a population is declining.

Figures 2-4 shows the population pyramids for Bullitt County for the years 2000 to 2050 as projected by the Kentucky State Data Center. During this time period, the number of school aged children and younger persons in the workforce steadily decline while middle aged workers age toward retirement. The pyramid is becoming increasingly inverted. It is anticipated that the median age of Bullitt County residents, which was 34.5 in 2000 and 38.2 in 2010, will continue to gradually increase to 44.3 by 2050. The pyramids also show that females account for the majority of elderly persons in the population. These shifts may indicate a greater need for housing for empty-nesters, retirement housing, and assisted living facilities over the next thirty years.

Figure 2-5 shows that the number of school aged persons and those in the workforce will steadily decline as a proportion of the county's population into the year 2050. While those aged 65 and older were 11.2% of the population in 2010, they will double to 22.2% of the population by 2050.

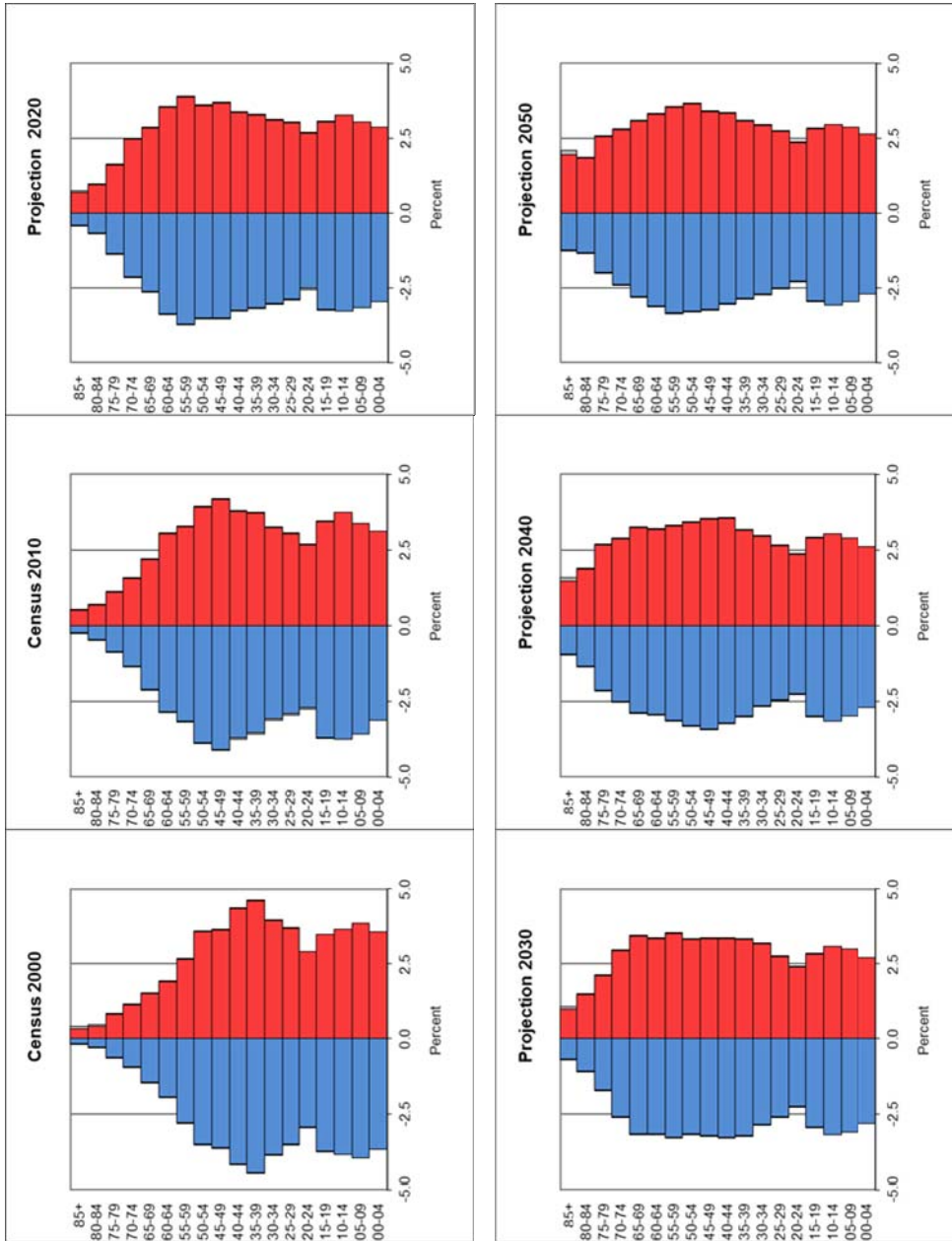


Figure 2-4

Bullitt County Population Pyramids 2000 to 2050

Sex-age data are shown as percent of total population.

Kentucky State Data Center
University of Louisville
September, 2011

Males in households



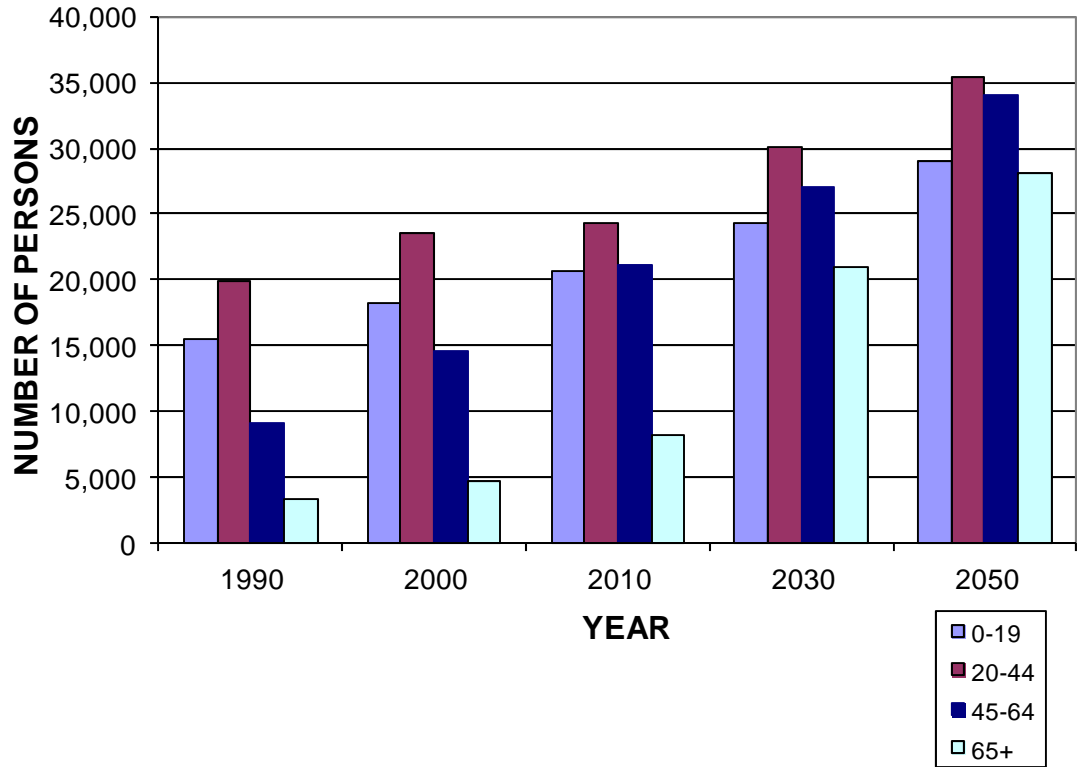
Females in households



Bullitt County



**FIGURE 2-5
BULLITT COUNTY POPULATION BY AGE GROUP**



AGE	1990	2000	2010	2030	2050
0-19	15,467	18,302	20,682	24,325	29,069
20-44	19,964	23,609	24,239	30,157	35,462
45-64	9,179	14,533	21,111	27,059	34,056
65+	3,287	4,792	8,287	20,920	28,121
Total	47,897	61,236	74,319	102,461	126,708

Source: University of Louisville, Urban Studies Institute, Projections of Total Resident Populations by Age and Sex, Dec. 2011

HOUSEHOLDS AND FAMILY

The basic reporting unit, in terms of demographic data, is the household. The household is also the most prevalent living arrangement in American society. A household can either be classified as a family household or non-family household. A family household is comprised of two or more persons, related by blood, legal adoption, or marriage. In the year 2000, there were 2.59 persons per household in United States with slightly less than that (2.47) in the state of Kentucky.

As shown in Table 2-2, Bullitt County has consistently had more persons per household than the state or the KIPDA Area Development District. This trend is expected to continue in the future with the number of persons per household for Bullitt County leveling off at 2.4 by the year 2040.

**TABLE 2-2
PERSONS PER HOUSEHOLD**

	US Census		KSDC Projections		
	2000	2010	2020	2030	2040
Bullitt County	2.75	2.67	2.52	2.43	2.40
KIPDA	2.43	2.42	2.37	2.34	2.33
Kentucky	2.47	2.45	2.38	2.34	2.32

Bullitt County

